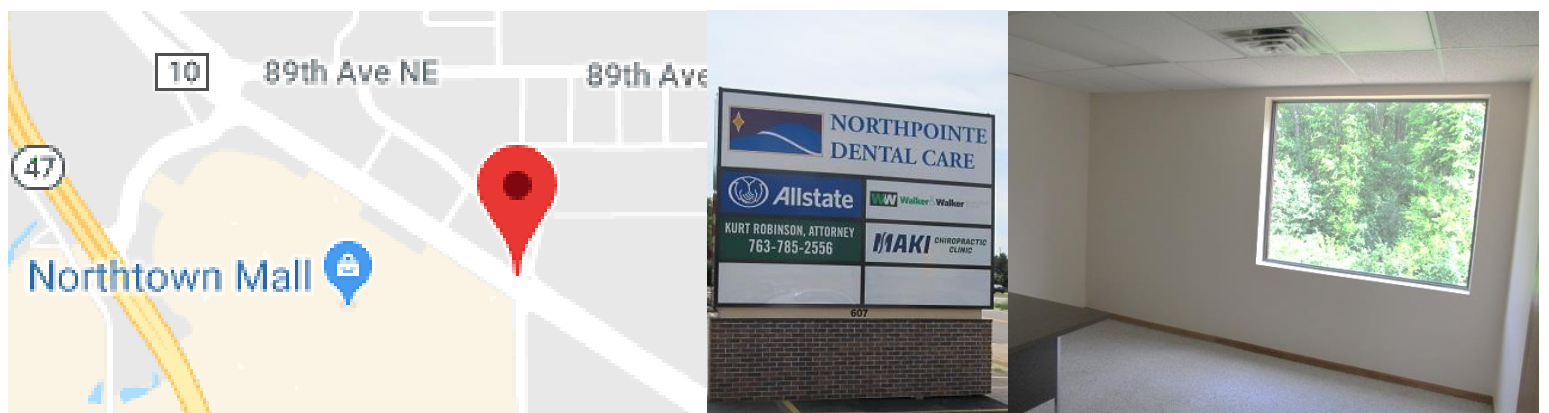


Office Space Available

601 NE County Road 10, Blaine, MN



This property is conveniently located directly adjacent from Northtown Mall, in a thriving commercial area near many businesses, schools, restaurants, and entertainment. It offers plentiful, free parking, a rooftop patio for tenant use, suites with large windows, new carpet and lighting, flexible terms and great rates.

CONTACT Barb at

**Two suites available: 720 s.f. and 1,075 s.f. with 3 windowed offices

651-482-9668



OFFICE HERE®

Your Full Service
Commercial Real Estate Source